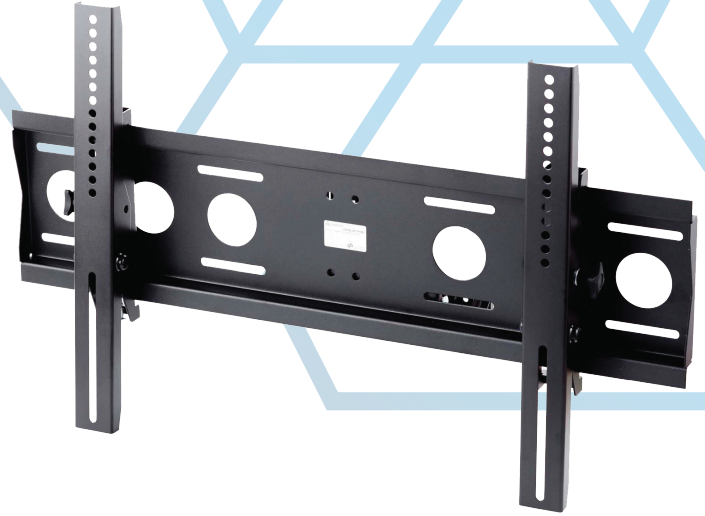


PWB2

UNIVERSAL TILT WALL MOUNT

FOR 42"-65" SCREENS

Designed for the installation of medium-sized screens. PWB2 is a robust, tilting wall mount that provides extraordinary functionality with its minimalist design. The ease of installation makes it very simple to use on all types of wall surfaces. Screen protection against falling, robust finish and, at the same time, modern design allow the use of PWB2 in conference rooms, waiting rooms or public areas.



FEATURES

- Robust design to ensure load capacity up to 80 kg
- Screen protection against falling
- Screen mounting screws included
- Simple and quick installation
- Lateral adjustment of the screen once mounted on the wall plate
- Suitable for installation on brick, concrete, plaster and wooden walls
- Minimalist design and functionality
- Modern design

PRODUCT SPECIFICATIONS

Short index	PWB2
Category	Tilt Wall Mounts
Product group	Display Mounts
Colour	Black
Warranty	Limited 5-years
Number of screens	1
Minimum screen size	42"
Maximum screen size	65"
Maximum load	80 kg
Forward tilting	-6,5°/+12°
VESA Mounting Compatibility	100x100 up to 600x400



42"-65"



100x100
600x400



-6,5°/+12°



80 kg



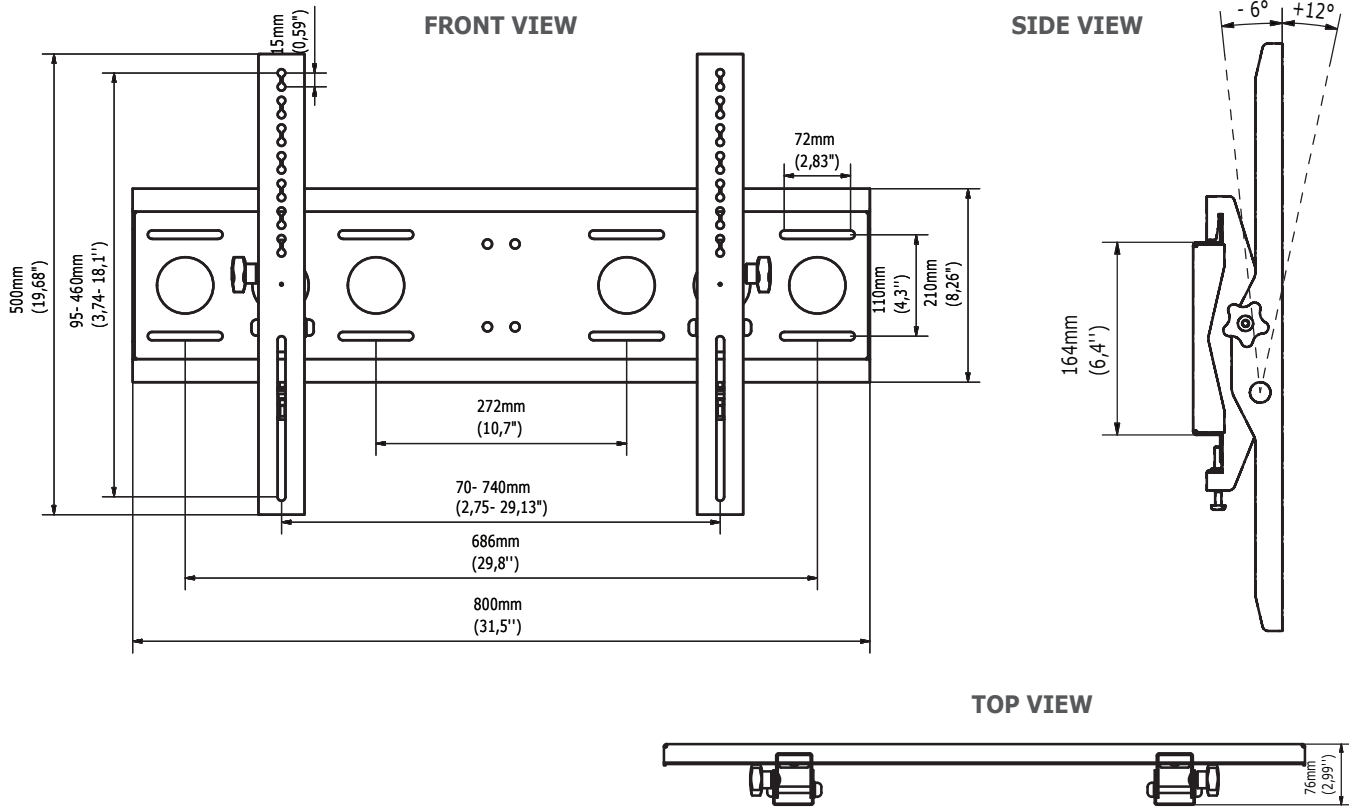
Robust design to ensure load capacity up to 80 kg



Screen protection against falling



Screen tilt adjustment


TECHNICAL SPECIFICATIONS

Product dimensions	W: 800 mm D: 76 mm H: 500 mm (W:31,50" D:2,99" H:19,69")
Product weight	5,2 kg (11 lb)
Max. distance from mounting surface	76 mm (2,99")
Min. distance from mounting surface	76 mm (2,99")
Max. mounting pattern	740 mm x 460 mm
Min. mounting pattern	70 mm x 95 mm

LOGISTICS DATA

SAP INDEX	EAN CODE	COLOUR	PACKAGE DIMENSIONS	PACKAGE WEIGHT
WUSC-PWB2c-B	5902841103672	BLACK	830 x 220 x 80 mm 32,68 x 8,66 x 3,15"	5,5 kg 12 lb

HS Code (Harmonized System): 732690, HTS Code (Harmonized Tariff Schedule): 7326909890, Country of Origin: Poland

ACCESSORIES AND RELATED PRODUCTS


PWB1



TWB1



TWB2



EWB250